

MB491+LP MFP

OKI®



Fast, full-featured, environmentally friendly
black & white MFP – with Legal-size scanner



OKI and The Environment

- LED Technology** Long printhead life, high efficiency
- ENERGY STAR® Compliant** Superior energy efficiency
- 2-Sided Printing/Copying** Saves energy and resources
- Deep-Sleep Mode** Lowers power to save energy (<3W)
- Auto Power Off** Saves power during periods of non-use
- Separate Toner and Drums** Less disposable material



The MB491+LP MFP lets you scan legal documents on the glass – and gives you all the productivity features you expect from OKI®.

Highlights:

- Professional, affordable solutions— print, copy, scan and fax
- Compact design, ideal for small office or small workgroup
- 8.5" x 14" flatbed scanner accepts legal-size documents
- Fast black & white printing at up to 47 ppm, copying at up to 40 cpm¹
- Duplex (2-sided) printing/copying standard
- 50-sheet reversing/duplex automatic document feeder (RADF – scans both sides)
- Color scanning with send-to functionality
- Multi-tasking functionality standard, enabling two tasks to be performed at once²
- Operator panel with backlit 3.5" LCD display, 1-touch function buttons, alphanumeric keypad, and full QWERTY keyboard
- Document management through Nuance® PaperPort®, OCR with Nuance OmniPage®
- Ethernet and USB connectivity standard (including walk-up USB slot)
- ENERGY STAR® compliant
- Upgradable paper capacity with 530-sheet second tray
- 1-Year On-Site limited warranty³
- Live, toll-free technical support 24/7/365³

Everything the small workgroup requires –

The MB491+LP Mono MFP from OKI combines black & white printing and copying, color/mono scanning with scan-to capabilities, and analog faxing. This affordable, compact, networked MFP lets you produce professional-looking documents—with productivity-boosting speeds and budget-enhancing efficiency.

The MB491+LP delivers up to 47 prints and 40 copies per minute, with a time-to-first-page as fast as 5 seconds.¹ To help control costs, it comes with duplex (2-sided) printing/copying standard, so you can save paper and energy. For ongoing savings, its 2-piece consumables configuration lets you replace just a toner cartridge when you need to, instead of the toner cartridge and the image drum.

Sharing files and documents is a snap – Place your document on the legal-size (8.5" x 14") flatbed platen and scan it in color or black & white—or in the 50-sheet reversing/duplex automatic document feeder (RADF) and scan both sides. Save and send the electronic version to a folder on your PC, to the network or an FTP site, as an attachment to an e-mail address, or as a fax.

The MB491+LP offers robust fax features, including Internet (T.37) faxing, one-touch dialing, distinctive ring, broadcast faxing, and LDAP support. It also offers an Auto Delivery feature that routes all incoming faxes to a folder or to specified e-mail addresses.

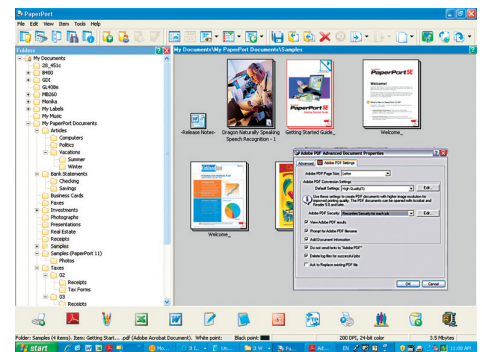
Further enhance your productivity – With standard multi-tasking functionality, the MB491+LP enables you to perform several simultaneous tasks, such as scanning a document while the unit is printing, or printing a document during fax communications...²

The MFP has a Job Macro function (accessible right on the operator panel) that records and instantly recalls frequently used tasks and settings—automating them for increased productivity and efficiency.

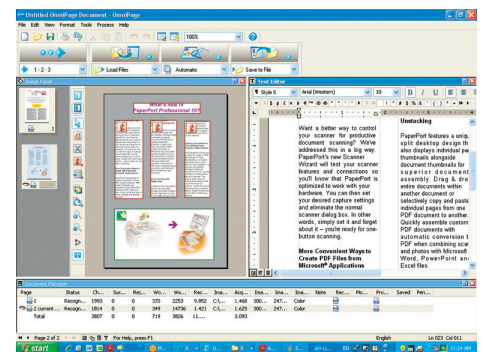
And for printing on the go, the MB491+LP is compatible with mobile printing applications through its network connectivity.

Document management made easy – Among the utilities that come standard with the MB491+LP MFP are PaperPort® and OmniPage® by Nuance®. PaperPort is the industry-leading, award-winning software that will enable you to easily organize your scanned files, further enhancing your productivity. With its intuitive, thumbnail-based interface, PaperPort lets you save any scanned document in a PDF or JPEG format, and quickly make it available for archiving or sharing.

The feature-rich OmniPage converts scanned documents and PDF files into editable file formats used by applications such as Microsoft® Word, Excel®, Adobe® Acrobat® or HTML files.



Nuance's PaperPort is an award-winning scanning and document management application that turns paper into digital content.



OmniPage software converts paper into editable electronic documents (via OCR), saving you time and increasing your productivity.



The compact MB491+LP MFP features an 8.5" x 14" flatbed scanner, as well as a 50-sheet reversing/duplex automatic document feeder (RADF) that scans both sides of a document.

¹ Published performance results based on simplex printing of letter-size sheets in laboratory testing. Individual results may vary.

² Multiple tasks are completed automatically in order, not necessarily simultaneously.

³ Available in the U.S. and Canada only.

Take control of your office security and your bottom line with this versatile, compact desktop MFP.

Control the way your MFP is used – The MB491+LP MFP allows an administrator to grant or restrict access to individuals or groups of users. Simply assign individual PIN identification codes to your personnel, according to their privileges: print, copy, scan-to-email or network folders and transmit faxes. Users can unlock the restricted functions— with your permission—by entering their PIN codes into the machine’s control panel.

Improve your bottom line – The MB491+LP delivers cost-effective operation as well as an exceptional return on your investment. Its outstanding reliability and long-lasting consumables help you control operating costs and improve productivity:

- Support one device rather than several
- Stock fewer replacement supplies
- Reduce user interventions

The MB491+LP MFP has a Deep Sleep mode that uses less than 3 watts of electricity during short periods of inactivity, and will even shut itself off after a minimum of 4 hours¹ — so you pay less on energy costs. Your investment just keeps looking better and better.

The MB491+LP MFP from OKI. Performance, flexibility and savings—all in one.

MB491+LP MFP at a Glance:



MB491+LP MFP Operator Panel
(backlit LCD display tilts up as much as 90°)



Full QWERTY keyboard
(behind 1-Touch key panel)



Legal-size flatbed scanner: handles documents up to 8.5" x 14" on the glass and via the RADF

Easy-to-access functionality: primary features are simple to locate and access

Backlit LCD display: tilts up for easy reading; simplifies navigation to further enhance user productivity

Fast print/copy speeds: up to 47 ppm and 40 cpm²

100-sheet multi-purpose feeder: also handles 3" x 5" cards, envelopes and banner sheets up to 8.5" x 52"

Optional 530-sheet 2nd paper tray: increases maximum paper capacity to 880 sheets

50-sheet Reversing/Duplex Auto Document Feeder (RADF): scans both sides of a sheet; increases user productivity

Alphanumeric keypad: easily enter fax numbers, codes and quantities

Full QWERTY keyboard: behind one-touch panel

Scan to/Print from USB memory stick: convenient front port makes these operations quick and easy

4GB SD memory card: standard

250-sheet paper tray: standard

¹ Power Save button must be pressed to awaken unit from Deep Sleep mode; Auto Power Off is user-configurable (4-hour default).

² Published performance results based on simplex printing of letter-size sheets in laboratory testing. Individual results may vary.

MB491+LP MFP

Specifications

Printer

- **Print Speed:** As fast as 47 ppm¹
- **Duplex Print Speed:** As fast as 20 ppm¹
- **Time to First Page:** As fast as 5 seconds¹
- **Warm-up Time:** As fast as 25 seconds from Power Save mode
- **Print Resolution:** Up to 1200 x 1200 dpi
- **Processor Speed:** 330 MHz
- **Monthly Duty Cycle:** Up to 80,000 pages
- **Recommended:** 750–6,000 pages/month
- **Emulations:** PCL[®] 6, PCL 5e; PostScript[®] 3¹; PDF v1.7; IBM[®] PPR; EPSON[®] FX
- **Operating Systems:** Windows[®] 7 (32/64-bit), Vista[®] (32/64-bit), XP (32/64 bit), Server 2008 (32/64-bit), Server 2008 R2 (64-bit), Server 2003 (32/64-bit); Mac OS X 10.4.0 – 10.7.2; Linux
- **Connectivity:** 10/100 Base-TX Ethernet; USB 2.0 (Device and Host)
- **Duplex (2-Sided) Printing:** Standard

Copier

- **Copy Speed:** As fast as 40 cpm¹
- **Time to First Copy:** As fast as 10 sec.¹ from RADF
- **Copy Resolution:** Up to 600 x 600 dpi
- **Copy Scaling:** 25% to 400%
- **Copy Quantity Selection:** 1–99
- **Duplex (2-Sided) Copying:** Standard
- **Copy Functions:** ID Copy; Collate; n-Up; Mixed originals; Edge erase

Scanner

- **Scan Type:** Color CIS
- **Platen Glass Size:** 8.5" x 14" (216mm x 355.6mm)
- **Document Input:** 50-sheet Reversing/Duplex Automatic Document Feeder (RADF); Single-sheet flatbed scanner
- **Scan Speed:** As fast as 2 sec./page Black & White; as fast as 6 sec./page Color¹
- **Scan Resolution:** 600 dpi
- **Scan-to:** Folder (CIFS), E-mail (with LDAP support), FTP, TWAIN, WIA, HTTP, USB memory, Application with Actkey software
- **Color Scan Depth:** Input 48-bit, Output 24-bit
- **Contrast Adjustment:** 7 levels

Fax

- **Fax Modem:** 33.6 kbps Super G3
- **Connectivity:** RJ11 x 2 (Line/Tel), PSTN, PBX Line
- **Fax Memory:** 4 MB (approx. 200 pages²)
- **One-Touch Dials:** 16 (8 x 2 using Shift key)
- **Speed Dials:** Up to 100 locations; 20 groups
- **Broadcast Dials:** Up to 100 locations using pre-programmed numbers
- **Auto Delivery:** Routes all incoming faxes to folder or specified email addresses

- **Fax Functions:** Fax from PC; Fax to email; Fax to fax server; Internet Fax (T.37); Transmit – from memory, manual; Auto redial; Receive – auto, to memory, manual; Dual access; Delayed transmit; Broadcast; Auto Fax/Tel switch; Distinctive ring detection; Time/Date stamp

Address Book

- **E-mail and Fax:** LDAP, 100 E-mail addresses, 20 group addresses

Utilities

- **Document Management:** Nuance[®] PaperPort[®] SEv11 and Nuance OmniPage[®] SEv16¹
- **Printer/Job Management:** OKI PrintSuperVision and Job Accounting software

Memory

- **System Memory:** Standard/Max 256 MB RAM; standard 4 GB SD Memory Card

Operator Panel

- **Features:** 3.5" backlit LCD display; 1-Touch function buttons; Alphanumeric keypad; QWERTY keypad

Paper Handling

- **Standard Capacity:** 250 sheets + 100-sheet Multipurpose Feeder; RADF – 50 sheets
- **Max Capacity:** 880 sheets, 10 envelopes
- **Paper Sizes:**
 - Multipurpose Feeder:** 3" x 5" SEF up to 8.5" x 52" banner, com-10, com-9, C5, C6, DL and Monarch envelopes; **Tray 1:** Letter, Legal 14"/13.5"/13", Executive, Statement, A4, A5, A6, B5 (JIS); **Optional Tray 2:** Letter, Legal 14"/13.5"/13", Executive, Statement, A4, A5, B5 (JIS); **Duplex:** Letter, Legal 14"/13.5"/13", Executive, A4, B5 (JIS); **RADF:** Letter, Legal 14"/13.5"/13", Executive, A4, A5, A6, B5 (JIS); **Platen Glass:** Letter, Legal 14"/13.5"/13", A4, A5, A6, B5 (JIS)
- **Paper Weight:**
 - Multipurpose Feeder:** 16 lb. bond – 43 lb. index (60–163 gsm); **Tray 1/Optional Tray 2/ Duplex:** 16 lb. – 32 lb. bond (60–120 gsm); **RADF:** Simplex and Duplex 16 lb. – 28 lb. bond (60–105 gsm)

Security

- **Advanced:** IP and MAC filtering; SSL/TLS, EAP (IEEE802.1X), IPSec; SMTP Authentication
- **Secure Print:** PIN or password protection

Environmental

- **Size (WxDxH):** 19.1" x 16.7" x 17.9" (486mm x 425mm x 455mm)
- **Weight:** Approx. 44.7 lb. (20.26 kg)⁴
- **Power Consumption:**
 - Idle:** 80W; **Max:** 950W; **Typical:** 660W;
 - Power Save:** <14W; **Sleep:** <3W;
 - Power Off:** <0.5W

Ordering Information

Description	Part Numbers	
MB491+LP MFP (120V)	62439201	
MB491+LP MFP (230V)	62439202	
Options		
530-sheet 2nd Paper Tray	44575708	
16 GB SD Memory Card	70061701	
Supplies		
Toner Cartridge	4,000 pg. ⁶	44574701
Toner Cartridge	12,000 pg. ⁶	44917601
Image Drum	30,000 pg. ⁷	44574301
OKIcare[®] On-Site Warranty Extensions⁵		
	U.S.	Canada
2-Year On-Site Warranty	38030102	38030112
3-Year On-Site Warranty	38030103	38030113

- **ENERGY STAR[®] Compliance:** Yes
- **Acoustic Noise:** Operating (Printing/Scanning/Copying) 55dB(A) or less; Standby 30dB(A)

Warranty

- **System:** 1-Year On-Site⁵

For more information on Digital Mono MFPs and supplies from OKI—including OKIcare warranty extensions: **1.800.OKI.DATA (800.654.3282)**¹ or visit our website: **www.okidata.com**

Specifications are subject to change without notice. Featured products may not be available in all countries. Please contact your local office for regional availability.

¹ Published performance results based on laboratory testing. Individual results may vary.

² Based on ITU-T Test Chart #1.

³ Windows only.

⁴ Including all consumables.

⁵ Available in the U.S. and Canada only.

⁶ Estimated life, based on ISO/IEC 19752. Units ships with 2,000-page toner cartridge.

⁷ Published performance results based on 3 pages per print job in simplex mode only. Individual results may vary.

© 2012 Oki Data Americas, Inc. OKI, OKIcare Reg. T.M., M.D., Oki Electric Industry Co., Ltd. Windows, Vista, Reg. T.M., Microsoft Corp. Mac Reg. T.M., Apple, Inc. Nuance, PaperPort, OmniPage Reg. T.M., Nuance Communications, Inc. PCL Reg. T.M., Hewlett-Packard Co. PostScript Reg. T.M., PostScript 3 T.M., Adobe Systems, Inc. IBM Reg. T.M., International Business Machines Corp. Epson Reg. T.M., Seiko Epson Corp. USB/IF Logo T.M., Universal Serial Bus Implementers Forum, Inc. ENERGY STAR Reg. T.M., U.S. EPA.



OKI DATA AMERICAS, INC.

USA
2000 BISHOPS GATE BLVD.
MOUNT LAUREL, NJ 08054-4620
TEL: 800.OKI.DATA (800.654.3282)
FAX: 856.222.5320

[WWW.OKIDATA.COM](http://www.okidata.com)

CANADA
4140B SLADEVIEW CRESCENT
UNITS 7 & 8
MISSISSAUGA, ONTARIO L5L 6A1
TEL: 905.608.5000
FAX: 905.608.5040

LATIN AMERICA
2000 BISHOPS GATE BLVD.
MOUNT LAUREL, NJ 08054-4620
TEL: 856.231.0002
FAX: 856.222.5071

OKI DATA DE MÉXICO, S.A. DE C.V.
MARIANO ESCOBEDO, 748 8º PISO
COL. NUEVA ANZURES C.P. 11590
MÉXICO, D.F.
TEL: 55.5263.8780
FAX: 55.5250.3501

OKI DATA DO BRASIL INFORMÁTICA LTDA.
AV. ALFREDO EGÍDIO DE SOUZA ARANHA, 100
BLOCO C – 4º ANDAR
04726-170 – SÃO PAULO – SP – BRASIL
TEL: 11.3444.3500
FAX: 11.3444.3502